

SQUASH

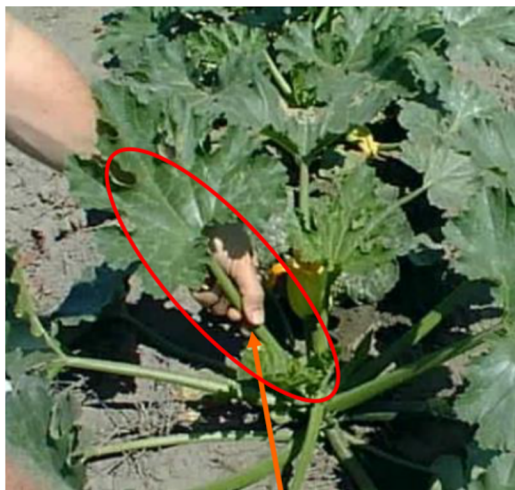
Take first fully expanded leaf - usually the fourth or fifth leaf back from the growing point. **BE SURE TO TAKE WHOLE LEAF & STEM (petiole), not just the leaf blade.**

Take at least **60** leaves, randomly across the block. Up to **100** leaves may be required if petioles are very small. The part to be tested is the petiole, or leaf stalk. Leaf blades can be removed before dispatching sample.

If you require a Sap 4 comprehensive analysis please collect **twice** as many tops.

Monitoring program

Begin sampling at pre-flowering stage, fortnightly or monthly to harvest, or sample by crop stage.



1ST FULLY EXPANDED LEAF

SQUASH

DIFFERENTIAL SAP ANALYSIS

Take first fully expanded leaf - usually the fourth or fifth leaf back from the growing point. BE SURE TO TAKE WHOLE LEAF & STEM (petiole), not just the leaf blade. This will become your NEW LEAF SAMPLE.

Take a fully expanded leaf from the outer edge of the plant. BE SURE TO TAKE WHOLE LEAF & SETM (petiole), not just the leaf blade. This will become your OLD LEAF SAMPLE.

Monitoring program

Begin sampling at pre-flowering stage, fortnightly or monthly to harvest, or sample by crop stage.



NEW LEAF

(1ST FULLY
EXPANDED LEAF)

OLD LEAF